



REGIONAL SPECIALISED METEOROLOGICAL CENTRE-TROPICAL CYCLONES, NEW DELHI TROPICAL WEATHER OUTLOOK

DEMS-RSMC TROPICAL CYCLONES NEW DELHI DATED 09.01.2025

TROPICAL WEATHER OUTLOOK FOR THE NORTH INDIAN OCEAN (THE BAY OF BENGAL AND THE ARABIAN SEA) VALID FOR THE NEXT 168 HOURS ISSUED AT 0600 UTC OF 09.01.2025 BASED ON 0300 UTC OF 09.01.2025.

BAY OF BENGAL:

Yesterday's cyclonic circulation over Southeast Bay of Bengal & adjoining Equatorial Indian Ocean extending upto 3.1 km above mean sea level persisted at 0300 UTC of today, the 09th January, 2025.

Scattered low and medium clouds with embedded intense to very intense convection lay over southeast Bay of Bengal, south Andaman Sea and moderate to intense convection lay over southwest Bay of Bengal, north Andaman Sea. Scattered low and medium clouds over north & central Bay of Bengal.

*PROBABILITY OF CYCLOGENESIS (FORMATION OF DEPRESSION) DURING NEXT 168 HRS:

24 HOURS	24-48 HOURS	48-72 HOURS	72-96 HOURS	96-120 HOURS	120-144 HOURS	144-168 HOURS
NIL	NIL	NIL	NIL	NIL	NIL	NIL

*NOTE: EVERY 24HR FORECAST IS VALID UPTO 0300 UTC (0830 IST) OF NEXT DAY

ARABIAN SEA:

A fresh cyclonic circulation lay over southeast Arabian Sea off Kerala coast at 3.1 km above mean sea level at 0300 UTC of today, the 09th January, 2025.

Scattered low and medium clouds with embedded intense to very intense convection lay over southeast Arabian Sea adjoining equatorial Indian ocean. Scattered low and medium clouds with embedded isolated weak to moderate convection lay over central & southwest Arabian Sea.

*PROBABILITY OF CYCLOGENESIS (FORMATION OF DEPRESSION) DURING NEXT 168 HRS:

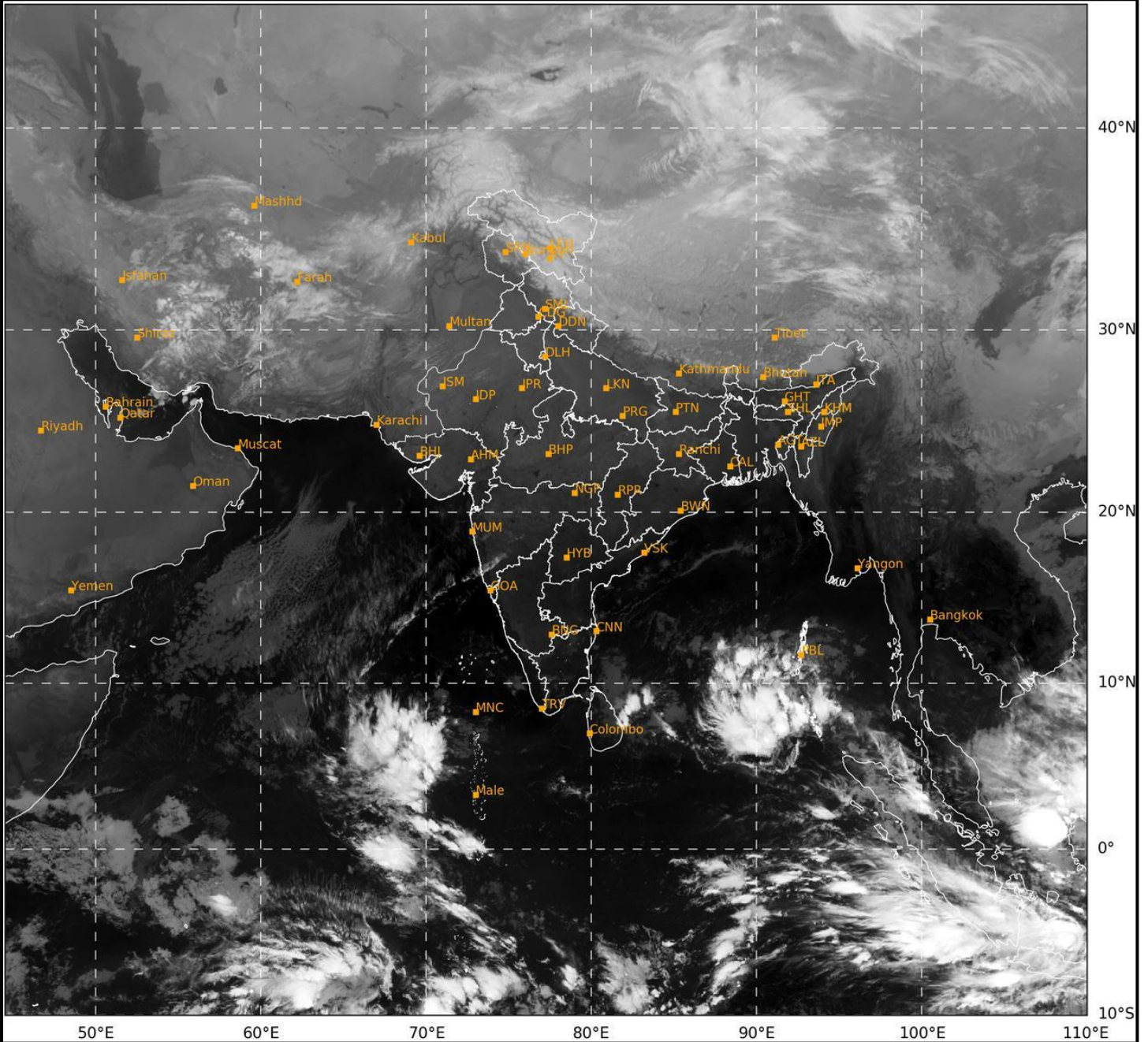
24 HOURS	24-48 HOURS	48-72 HOURS	72-96 HOURS	96-120 HOURS	120-144 HOURS	144-168 HOURS
NIL	NIL	NIL	NIL	NIL	NIL	NIL

*NOTE: EVERY 24HR FORECAST IS VALID UPTO 0300 UTC (0830 IST) OF NEXT DAY

REMARKS: NIL

SAT : INSAT-3DR IMG
 IMG_TIR1 10.8 um
 L1C Mercator

09-01-2025/(0245 to 0312) GMT
 09-01-2025/(0815 to 0842) IST



472

941

IMD, DELHI

Cloud distribution: (a) Isolated: <25%, Scattered: 25-50%, Broken: 51-75%, Solid: >75%, Convection Intensity: (a) Weak: Cloud Top Temperature (CTT) >-25°C, (b) Moderate: CTT: -25°C to -40°C, (c) Intense: CTT: -41°C to -70°C and (d) Very Intense: : Less than -70°C
 PROBABILITY OF CYCLOGENESIS (FORMATION OF DEPRESSION): NIL: 0%, LOW: 1-33%, MODERATE: 34-66% AND HIGH: 67-100%
 This is a guidance Bulletin for WMO/ESCAP Panel Member countries. Visit respective National websites for Country specific Bulletins